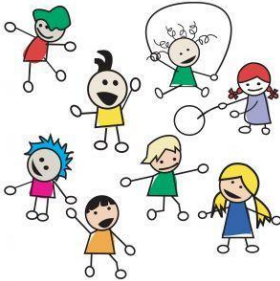


WHITMINSTER ENDOWED C OF E PRIMARY SCHOOL
A Family, A Foundation, A Future

School Lane
Whitminster
Glos
GL2 7PJ
Telephone: 01452 740406
admin@whitminstercofe.gloucs.sch.uk
www.whitminstercofe.gloucs.sch.uk
Head Teacher: Miss A Parry-Jones

SPORTS DAY – Wednesday 4th June 9.30am – 12.30pm



We would like to invite you to our annual Sports Day and Family Picnic. Parents and friends will join the children on the field for our Sports day – group activities and traditional races. We would like to finish with a family picnic on the field approximately starting at 12pm. The children will return to their classroom after the lunch break at 1pm.

If you would like to order your child a school packed lunch please complete the slip below and return to the school office by the **23rd May**. If sports day and the picnic have to be cancelled due to the weather, your child will still receive the pre-order packed lunch on that Wednesday.
If we do need to cancel we will make a decision before 8am in the morning.

DON'T FORGET!

- **Your picnic for you and your child (unless you have pre-order a child's packed lunch)**
- **THERE WILL BE NO HOT LUNCH AVAILABLE ON THAT DAY**
- **Lots of sun cream and hat**
- **Plenty of WATER to drink**
- **Children to wear the colour of their team (T-Shirt) if possible. If your child is not sure please come and ask their teacher:
Russet – Yellow; Pippin – Red; Bramley – Green**

Let's hope the sun shines and you can all join us!

Kind regards,

Alison Parry-Jones

----- ✂ -----
PACKED LUNCH ORDER FOR SPORTS DAY – Wednesday 4th June (return by 23rd May)

I would like to order a packed lunch with baguette filling of:

Cheese Ham Tuna Please tick choice

Child's Name: _____ Class: _____

